

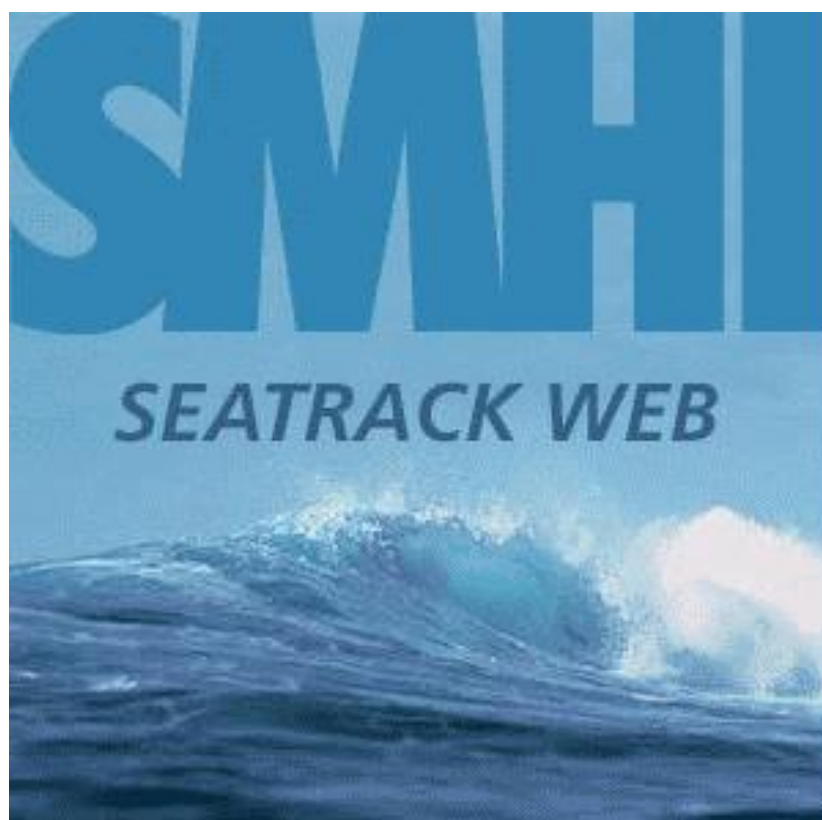
December 2011

Manual

Seatrack Web Vänern

A user-friendly system for forecasts and backtracking of drift and spreading of oil, chemicals and substances in water

Version 1.0



SMHI

1.	Introduction and Background	3
1.1	The circulation model	3
1.2	The weather model.....	3
2	Installation of Seatrack Web	4
2.1	System Requirements.....	4
2.2	Java Web start.....	4
3.	Start and Stop Seatrack Web Vänern	5
3.1	Start.....	5
3.2	Stop.....	5
4.	The graphical user interface	6
5.	Calculation parameters and start a calculation	7
5.1	Time	7
5.2	Substance	8
5.3	Discharge	9
5.4	Scenarios.....	9
5.5	Calculation options	9
5.6	Calculation info.....	10
5.7	Default values	10
5.8	Compute/Cancel.....	10
5.9	Stop	10
5.10	Common Information.....	10
6	Menues in the upper frame	11
6.1	Tool buttons for the map view, Define case, Continue case or Delete case.	12
7.	The calculation is ready.....	13
7.1	Visualisation of the result	13
7.2	Plot the wind, the surface currents and ice.....	14
7.3	Save a case	15
7.4	Show results in a table or plot.....	15
8	Support	16

1. Introduction and Background

Seatrack Web Vänern is an application of Seatrack Web for the lake Vänern. The application has been set up by SMHI.

Seatrack Web Vänern's main purpose is to calculate the spreading of oil in Vänern. The program can also be used for other substances than oil, such as chemicals or floating objects.

In addition to an oil drift forecast, it is possible to make a backward calculation. Then a calculation starts at the position where a substance was found. The programme calculates the drift backwards in time and traces the origin of the substance or an object.

1.1 *The circulation model*

Seatrack Web Vänern has access to forecasted current fields of the high resolution version of the Hironb model for Vänern. The horizontal grid resolution for Vänern is about 350 meters; the currents are calculated at every 350 meter. Vertically the resolution is 1 meter down to 20 meters, 2 meters down to 44 meters, 3 meters down to 68 meters and 4 meters down to 104 meters.

It is possible to plot and animate the forecasted surface currents.

The forecasts for Vänern are made once daily, and new +48 h forecasts are included into Seatrack Web Vänern every morning. Brief forecasts are also made every 6th hour in order to have the best starting values 24 hours after the earlier calculation. Every hour a new current field is taken into account.

1.2 *The weather model*

The wind forecasts originate from the Hirlam weather model run in SMHI. The wind forecasts used in Seatrack Web are from 10 meters height. The winds are calculated with 5*5 km horizontal grid resolution. Every hour a new wind field is taken into account.

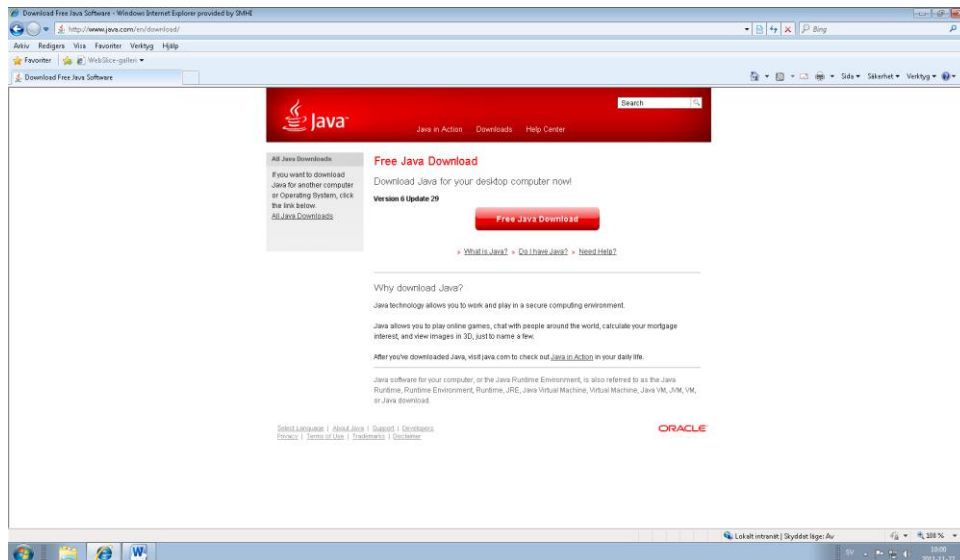
2 Installation of Seatrack Web

2.1 System Requirements

OS	Windows XP, Windows Vista, Windows 7 Linux Red Hat 6, Ubuntu
Computer Processor	1 GHz or more
Computer memory	512 MB or more
Screen resolution	1024x768 pixels
Web browser	Minimum Internet Explorer 8, Firefox 5
Java	Java 6 from Oracle (not IceTea or other java provider)

2.2 Java Web start

This version runs via 'Java Web start'. This is included in Java and should automatically be installed and used when starting Seatrack Web. If you have not installed java, make sure to install the latest version.



3. Start and Stop Seatrack Web Vänern

3.1 Start

Enter the Internet address, which is <https://stw-vanern.smhi.se/> in your Web browser.

The manual is found by clicking **User Manual**.

Scientific documentation explains the physics in the system.

If you want support, click **Contact**. See figure 1.

Press **Start Seatrack Web**, write **User** and **Password**, press Login and the map in Figure 2 appears.

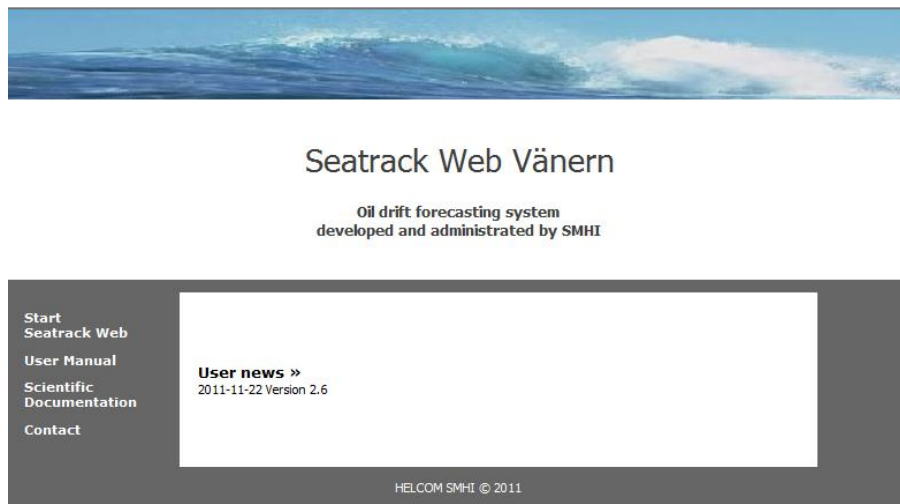


Figure 1. The Seatrack Web Vänern start page.

3.2 Stop

If you want to stop Seatrack Web, go to 'File' and click 'Exit'.

4. The graphical user interface

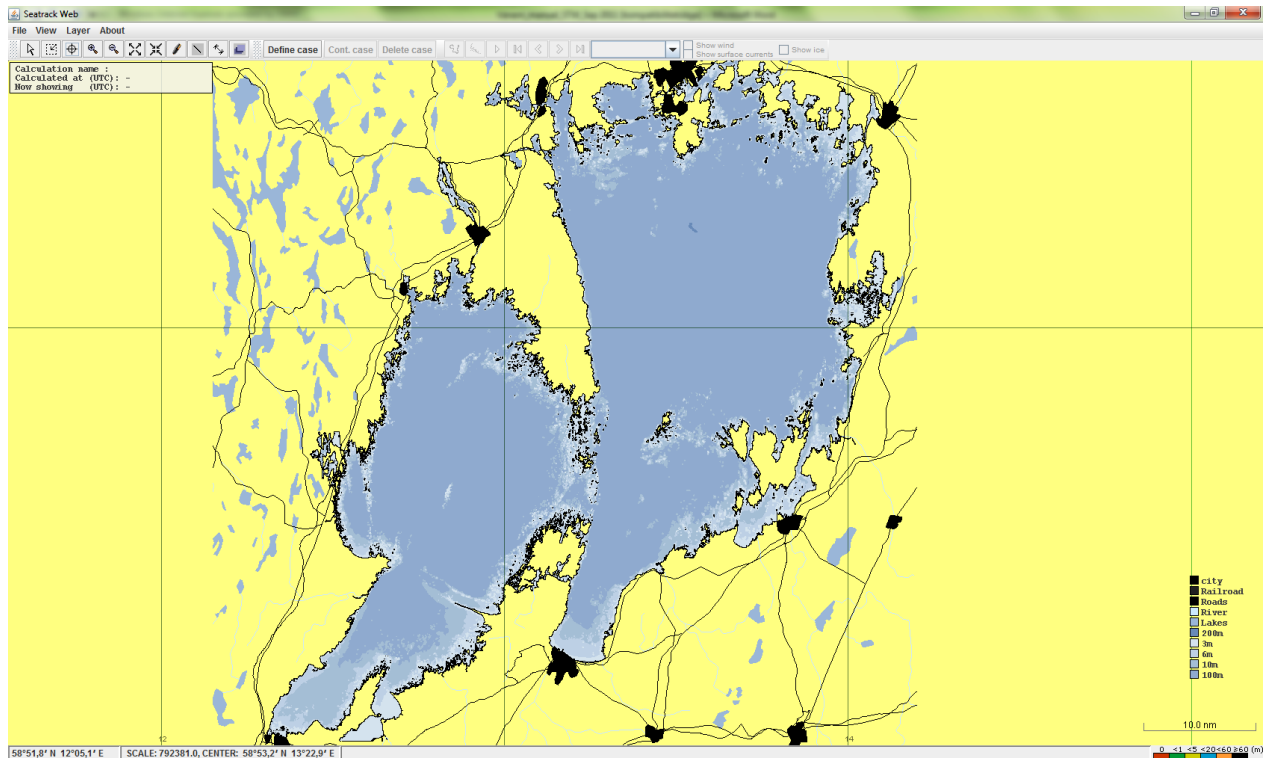


Figure 2. Map over the whole area with depth information.

Define Case

1. Choose outlet type.

★ Spill area

2. Draw, Import or Add starting point(s).
Unit: Degrees and decimal minutes.

Import ...

Add Edit Delete point(s)

Latitude	Longitude
58 53.400	13 14.717
58 53.400	13 17.589
58 51.174	13 17.850
58 53.400	13 14.717

Number of points = 6

3. Choose Model.

Vänern 370m, 2 days forecast, HIRLAM

4. Calculation parameters.

Calculation parameters

Figure 3. Define a new case

Define Case, see figure 3.

1. Choose Outlet type:

Center point of spill

Line spill, a line composed of one or several connected straight lines is possible

Spill area, a multicornered polygon

Particle positions, make a great number of free particles in the map

Fetch the red star when you want to mark the outlet position in the map. Click *once* for every outlet position. It is possible to move the corners of the spot. You can always add more points between the green points which show the first chosen position and last chosen position. To erase all the positions: doubleclick.

2. Draw, Import or Add starting point(s)

If you want to write the latitude and longitude in the table press ‘Add’. Remember that it is *degrees minutes and decimals of minutes*. You can also ‘Edit’ or ‘Delete point(s)’ that are chosen positions in the table. It is also possible to import an algae file, but we have no such files in Vänern yet.

Choose Model, in Vänern there is only one model, so it is already there.

Calculation Parameters, press this and you will be able to choose the rest of the relevant input information.

5. Calculation parameters and start a calculation

5.1 Time

The screenshot shows the 'Calculation parameters' dialog box with the following settings:

- Time & Position:**
 - Forward calculation (selected), Backward calculation (unselected)
 - Vänern 370m, 2 days forecast, HIRLAM
 - Start time (UTC): 2011-11-21 09:00
 - Stop time (UTC): 2011-11-23 00:00
 - Outlet depth (m): 0
- Substance:**
 - Oil classes (selected): Medium oils (100-1000 cSt), State of oil: Fresh
 - Oil, specific: Gasoline, State of oil: Select state
 - Oil lumps: 5 cm thick, floating
 - Floating object / Algae: Floating algae, Wind drag %: 00.00
 - Objects/substance: Constant depth
- Discharge:**
 - Instantaneous (selected): Amount 100 m3
 - Continuous: Total amount / Rate 10 m3, Duration 24 hours
- Scenarios:** Scenarios with prescribed currents and winds (unchecked)
- Calculation options:** Add uncertainty which depends on uncertainty in the weather forecasts (unchecked); Calculation mode: Brief (unselected), Normal (selected), Detailed (unselected)
- Calculation info:** Calculation name (empty), Other info (empty)

Figure 4. Start and stop time and outlet depth.

Forward calculation, make a forecast up to 48 hours ahead and start 14 days back in time. Default of **Stop time** is tomorrow at 24.00 UTC. Default of **Start time** is present time (now) UTC, Coordinated Universal Time.

Backward calculation, make a calculation backwards in time, to find the place where the oil or object comes from. The **Start time** now has to be ‘later’ than the **Stop time**.

Outlet depth is the initial depth of the spill. The depth is given in meters, decimals are possible.

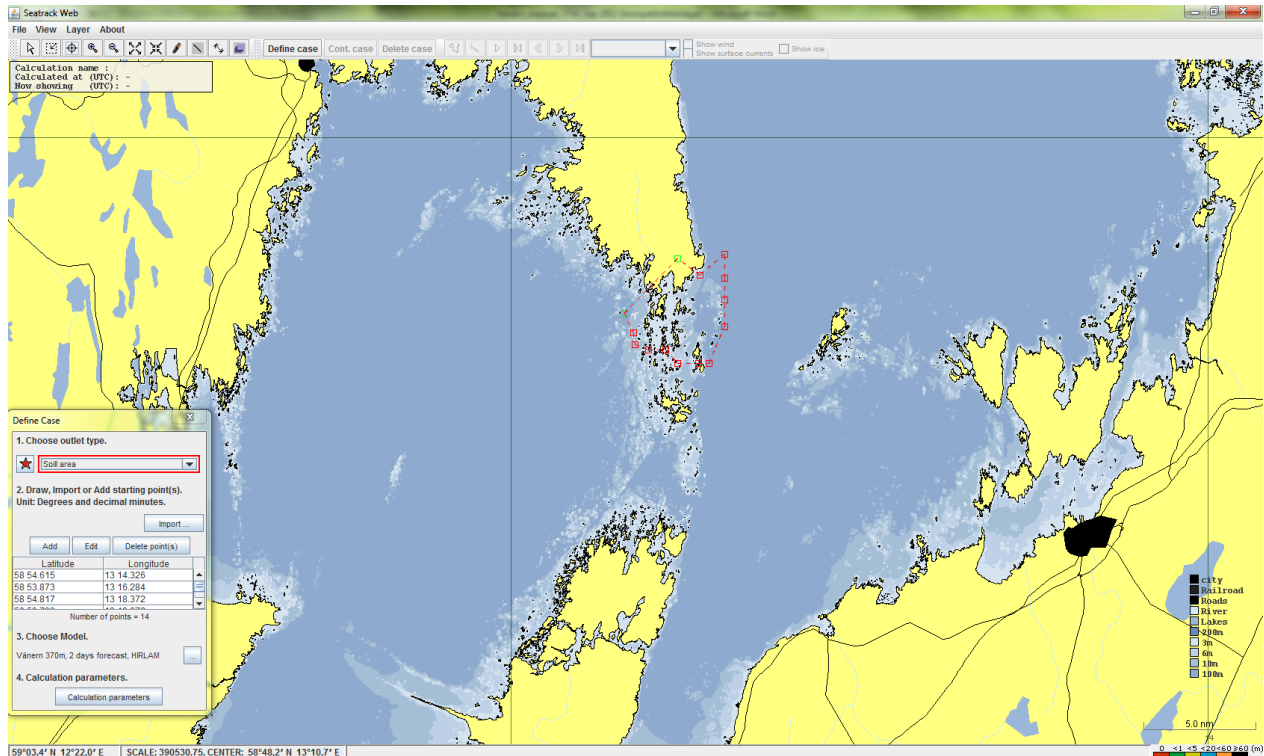


Figure 5. Outlet specified by a polygon which partly covers land.

5.2 Substance

In **Oil classes** there are 3 different viscosity intervals, **Light, Medium** and **Heavy oils**. A choice here is recommended if one does not have information about the oil type. See fig. 6. Choosing one of those gives the default values among the oils below

Light: Light Diesel Fuel

Medium: Intermediate Oil

Heavy: Bunker C.

The oils that emulsify are Light-medium crude, Heavy crude and Bunker C.

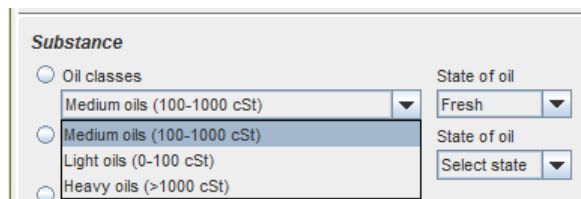


Figure 6. Choice of viscosity range.

State of oil; you have to select state, if it is new oil choose **Fresh oil**, but if the oil has been in the water for some time, choose **Weathered oil**. Evaporation and emulsification has stopped at the maximum value for **Weathered oil**.

Below **Oil, specific** there are 38 specified oils to be chosen. This is a possibility, when one has more information about the oil. Choose also **State of oil**.

Oil lumps gives 5, 10, 20 cm depth of the oil lumps.

Floating object/algae can be partly above the water surface. It is then possible to add an extra wind drag for the part that is above the water surface.

Objects/substance, Constant depth or Three dimensional spreading which is a passive tracer.

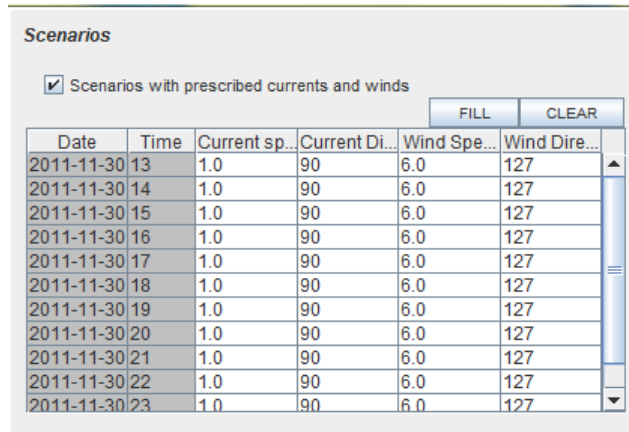
5.3 Discharge

Instantaneous spill, the **Amount** is m³ or tonnes. Decimals can be used e.g. 5.7 m³.

Continuous spill **Total amount/Rate**. Decimals can be used e.g. 0.4 m³/hour.

Duration of the spill is given in days or hours.

5.4 Scenarios



Date	Time	Current sp...	Current Di...	Wind Spe...	Wind Dire...
2011-11-30	13	1.0	90	6.0	127
2011-11-30	14	1.0	90	6.0	127
2011-11-30	15	1.0	90	6.0	127
2011-11-30	16	1.0	90	6.0	127
2011-11-30	17	1.0	90	6.0	127
2011-11-30	18	1.0	90	6.0	127
2011-11-30	19	1.0	90	6.0	127
2011-11-30	20	1.0	90	6.0	127
2011-11-30	21	1.0	90	6.0	127
2011-11-30	22	1.0	90	6.0	127
2011-11-30	23	1.0	90	6.0	127

Figure 7. The table to fill in for a scenario calculation.

If you want to make scenarios (which has nothing to do with reality), you choose

Scenarios with prescribed currents and winds. The time period that is shown in the window is the same as at **Time & Position**.

The user fills in the current every hour or at time steps of one's own choice. Then by pressing FILL, the hours in between the written data are filled with the nearest above information. This gives a possibility to write new currents at fewer time steps than every hour.

The **Current speed** is the current speed in knots. **Current direction** is the current direction (towards) in degrees measured clockwise from north (90 degrees means currents towards east, 180 degrees means currents towards south etc.). Note that the prescribed current will be the same at all locations and at all depths.

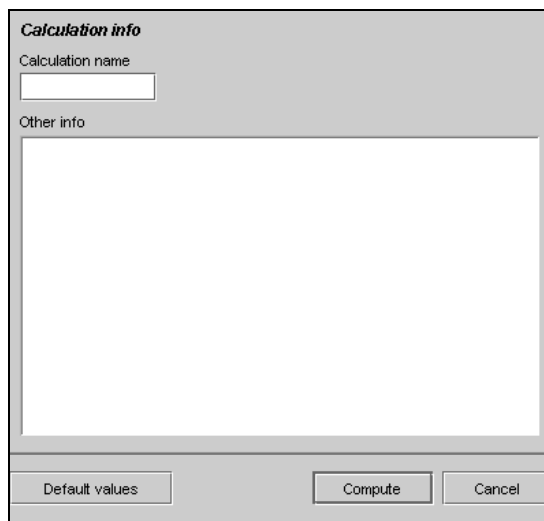
Choose CLEAR to erase all data and give new ones.

To account for the uncertainty in the weather forecast the user can select **Add uncertainty which depends on uncertainty in the weather forecasts**. When this option is selected the area over which the oil (or substance) is spread during the calculation will increase to reflect the possible spreading of the spill when the uncertainty of the weather forecast is included. Hence, the increased spreading should not be interpreted as a physical process, but as a consequence of the inherent uncertainty in the weather forecast.

5.5 Calculation options

Calculation mode gives the possibility to choose **Brief**: 10 particles, **Normal**: 500 particles or **Detailed**: 2000 particles. Sometimes one needs a fast answer and then Brief is recommended. When a high significance is needed many particles will improve the result. This choice takes a longer time to calculate. Normal is the default value.

5.6 Calculation info



The image shows a software dialog box titled "Calculation info". It has a light grey background. At the top left, the title "Calculation info" is displayed. Below the title, there is a label "Calculation name" followed by a small rectangular text input field. Underneath that is a label "Other info" followed by a larger, empty rectangular text area. At the bottom of the dialog, there are three buttons: "Default values" on the left, "Compute" in the center, and "Cancel" on the right.

Figure 8. The choice of a name of the calculation and a protocol.

Calculation name is the name you want to call the case. This is later written in the grey square in the upper left corner of the map. **Other info** is of your own choice, but is useful when you want to save the picture of the Calculation parameters by choosing **View** and **Input data**.

5.7 Default values

Go back to **Default values** in the **Calculation parameters** if needed.

5.8 Compute/Cancel

When the parameters are given, press **Compute** and start the calculation. If you want to go back to the map instead of starting a calculation, choose **Cancel**.

5.9 Stop

When a calculation is going on 'Calculation status' shows the hours where the program is. If you want to stop the calculation, press **Cancel**.

5.10 Common Information

For scenarios the water temperature is a climatological value for each month Not shown.

The surface current from the numerical model is the current representing the layer between 0 and 1 meter.

6 Menues in the upper frame

The menu in **Seatrack Web Vänern** is similar to the windows system, with some choices at the top of the screen. At the top frame are **File**, **View**, **Layer** and **About**.



File gives the following options:

Open Case- when you want to open an existing calculated case.

Save Case- when you want to save a calculated case. When **Save** is done you choose the directory yourself. Use suffix .xml.

Save Map as image – saves the map in a jpg format.

Email map image - mails the map.

Exit - close the application.

View gives the following options:

Vänern 370 m, 2 days forecast, HIRLAM tells you which period you have data.

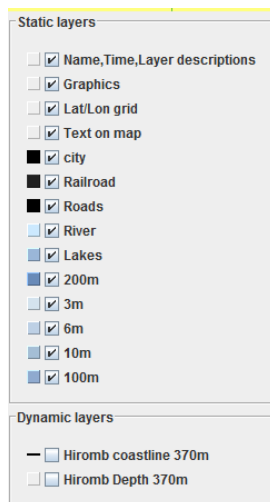
Forecasted currents are generated once a day for every hour and 2 days ahead.

Input data shows what parameters you have chosen for the calculation.

Results table shows weathering properties, currents and wind. They can be plotted by your own choice.

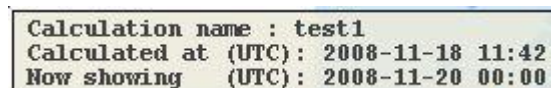
Layer

Show/hide layer selection gives the following options



When a box is chosen a label for each selected layer is shown.

Name & Time & Layer description means the grey square in the upper left corner of the map, showing the name of the calculation, the time it is made and the time of the result, the GIS info and depths.

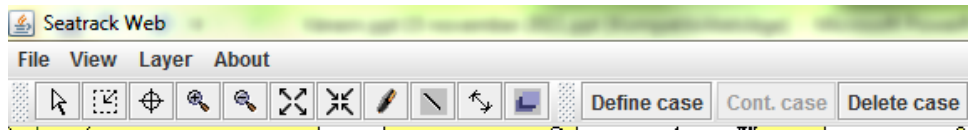


Graphics, makes it possible to draw green lines anywhere in the map.

About, information about the **Seatrack Web Vänern** system.

Contact, Contact persons

6.1 Tool buttons for the map view, Define case, Continue case or Delete case.



Arrow shows an arrow where the cursor is.

Zoom is a zooming tool, it is important that the area chosen has the cursor/cross in the lower right corner and not further down in the map. Otherwise another area is zoomed.

Center symbol gives the possibility to move the map on the screen, where you put the symbol, the new center will appear.

Zoom in gives one step zoom every time you click in the map.

Zoom out gives one step zoom out for every click in the map.



Maximize scale in current window, gives the whole map back.



Set map scale, choose your own scale and centerpoint. **Scale, Center** (lower left) shows your scale and centerpoint. If you later want to have the same map area.



Add, edit or delete text on map

Draw lines draw a green line, take away by doubleclick

Distance shows the distance in nautical miles and bearing (angle measured clockwise from north) below the map. You stop this by a double-click.

Show/hide layer selection opens the window with the GIS layers.

Define Case, opens the window where you give: Outlet type, Starting points, Model choice, Calculation parameters.

Continued Case, continue a calculation, which is just made. A default suggestion stop time comes up, giving one more day.

You can also continue a calculation that has been made earlier and saved in **Save case** below **File**, then go to File and press **Open Case**. You are asked where the saved file is, and copy it to STW.

Most of the information in the **Calculation parameters** is given from the earlier executed forecast in the saved case and can therefore not be changed. If the result from an earlier made forecast is verified against observations and there is a discrepancy between the last calculated position and the observation, the starting position can be altered in **Centre position** by giving new Latitude and Longitude there. New **Stop time** must be given, as the forecast now is prolonged from the previous forecast. The start time of the Continued Case is the stop time of the previous case and the new stop time is by default one day further ahead. This can be altered. New **Other info** below **Calculation info** can be written.

Delete case, return to default settings in Define Case.

Position information and scale in the lower left corner. You can see any position when moving the cursor in the map and the chosen scale.

7. The calculation is ready

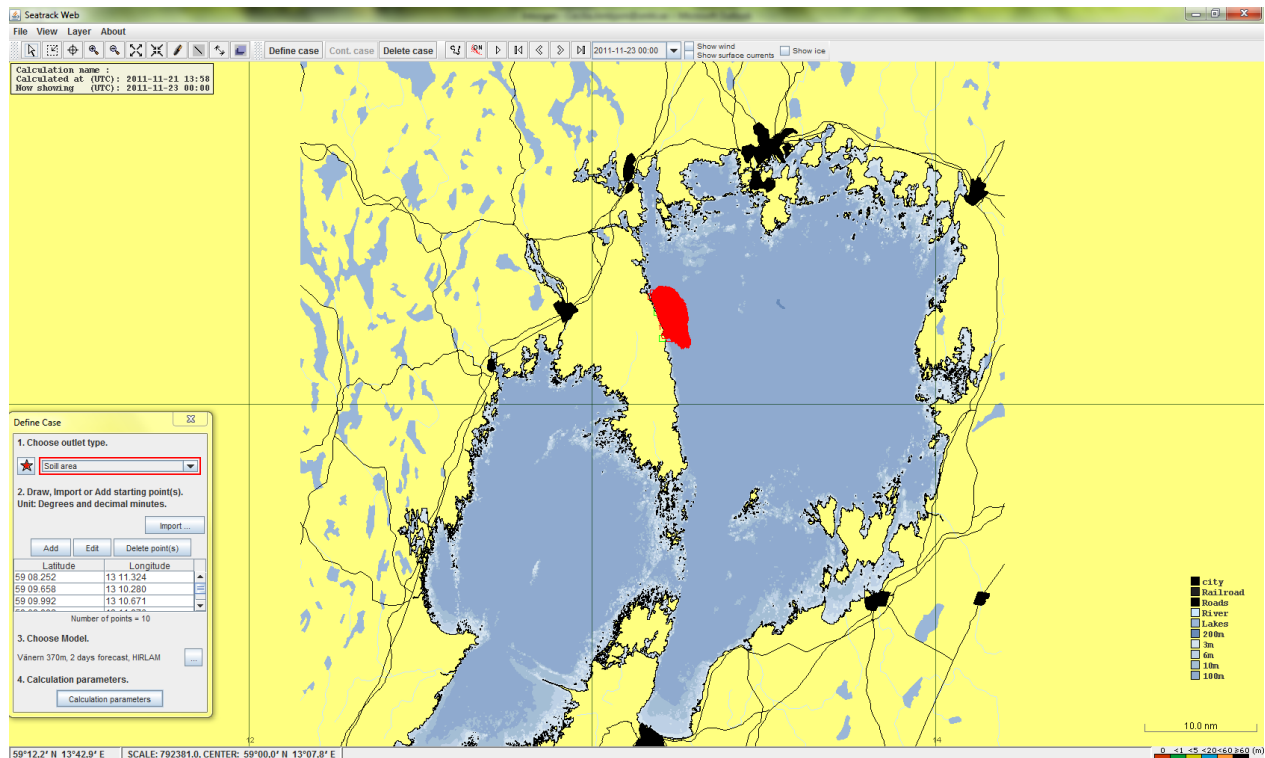


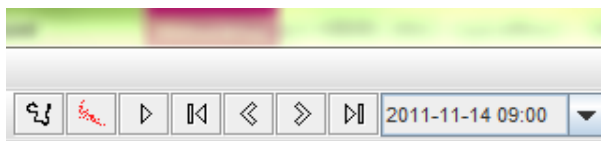
Figure 9. A result showing that the oil feels the coastline.

Figure 9 is shown when a calculation is ready. It shows how the oil stops at the coastline and clearly shows the areas that are threatened.



This scale, shown in lower right corner, gives information about the depth intervals where there is oil. Red is at the surface. Green is below the surface and less than 1 meter depth. Yellow is deeper than 1 meter and less than 5 meters. And so on.

7.1 Visualisation of the result



These parts of the upper frame are active when a calculation is made.

Trajectory ON/OFF– draws a line through the centre positions of the spots every 15 minute. To erase the trajectory click **Trajectory** again. Time, date and position are written every 15 minute if there is space. If you then zoom, more data will be written.

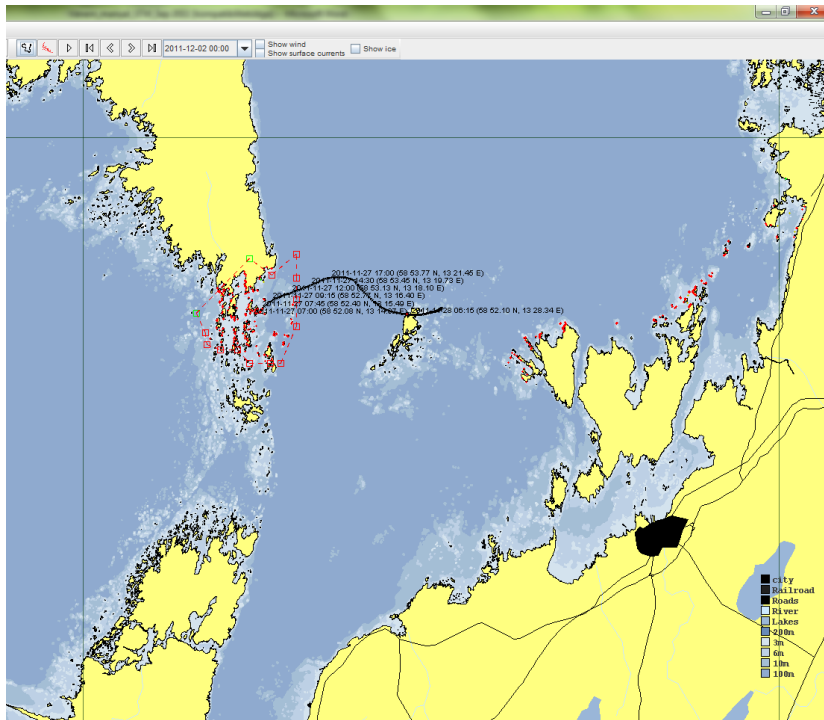
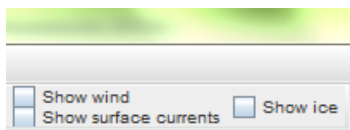


Figure 10. Trajectory in a zoomed area.

Trace ON/OFF and **Animate** – all the results from the forecast are shown automatically every 15 minute. To the left of Animate is **Trace**, which means that one sees every spot in the same view. The time of the animation is shown in the popup menu to the right. You can stop Animation by clicking **Animate** again.

To look at each spot specifically use **Start spot**. Choose **Step+1** to step 15 minutes in a forward calculation. The choice **Step-1** steps one hour backward in a forward calculation. **End spot** gives the spot of the last time step. Simultaneously one can see the time of the actual spot in the popup menu and at ‘Now showing’ in the information square in the upper left corner of the map. The popup menu can be used instead of the steps.

7.2 Plot the wind, the surface currents and ice



Show wind plots the 10 meter wind. The scale is given in the upper left corner of the map. Choose the time from which you want the plot. You can only look at a time covered by a made calculation. If you want to look at an earlier made saved calculation, then the data might be taken away from ‘Available current fields’ and they can’t be plotted. You can also animate the wind.

Show surface currents, plots the surface current, see figure 11. The scale is given in the upper left corner of the map. You can also animate the currents.

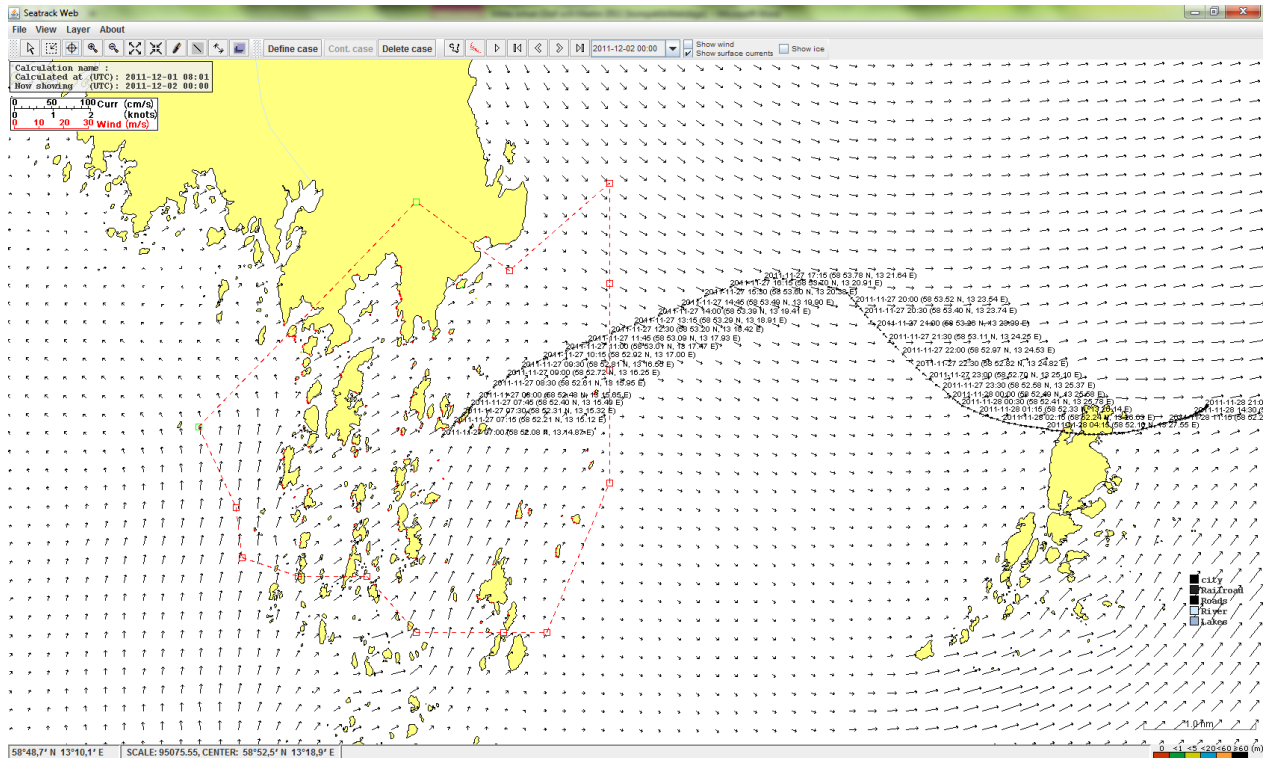


Figure 11. Surface currents in a zoomed area, without depth information.

7.3 Save a case

Save Case- when you want to save a calculated case. When **Save** is done you choose the directory yourself. Use suffix **.xml**.

7.4 Show results in a table or plot

View is shown in the upper frame.

Results table gives all the calculated data in 'ready to make' plots.

You can make a plot of the oil's different states by marking the wanted variables and press **Create chart** down to the left. The sum of all those makes 100 %. It is possible to plot the other variables such as viscosity and so on by clicking the wanted variables and press **Create chart**. Or make your own plot, by copying the table.

Substance: INTERM

Date (YYYY-MM-)	Time (..)	Center_pos_	Center_pos_	Current	Cur	Wind s.	Wt	Volume (m**3)	Viscosity (cSt)	Density	Evapor.	Oil at s.	Oil at surface	Disper.	Dispersed oil	Oil at s.	Oil at sea bed.	Oil at s.	Oil at shore (...)	Water ...
2011-12-09	08:00	58 55.22	12 49.79	0.14	338	12.5	160	100.0	140.0	900.4	0.0	100.0	100.0	0.0	0.0	0.0	0.0	0.0	0.0	0.0
2011-12-09	08:15	58 55.36	12 49.71	0.14	338	12.5	160	90.9	288.5	906.9	8.4	79.6	79.0	12.0	11.9	0.0	0.0	0.0	0.0	0.0
2011-12-09	08:30	58 55.49	12 49.63	0.14	328	12.8	152	88.9	340.5	908.6	10.3	74.3	73.7	15.3	15.2	0.0	0.0	0.0	0.0	0.0
2011-12-09	08:45	58 55.61	12 49.52	0.13	314	12.8	152	87.6	377.2	909.7	11.5	75.9	75.1	12.6	12.5	0.0	0.0	0.0	0.0	0.0
2011-12-09	09:00	58 55.73	12 49.40	0.13	314	12.8	152	86.6	407.8	910.5	12.4	77.6	76.7	10.0	9.9	0.0	0.0	0.0	0.0	0.0
2011-12-09	09:15	58 55.85	12 49.28	0.13	310	12.8	152	85.8	433.1	911.2	13.1	78.1	77.2	10.8	10.7	0.0	0.0	0.0	0.0	0.0
2011-12-09	09:30	58 55.96	12 49.16	0.13	297	12.3	149	85.2	455.8	911.8	13.7	78.7	77.7	7.6	7.5	0.0	0.0	0.0	0.0	0.0
2011-12-09	09:45	58 56.07	12 49.01	0.13	294	12.3	149	84.6	476.4	912.3	14.2	78.2	77.2	7.6	7.5	0.0	0.0	0.0	0.0	0.0
2011-12-09	10:00	58 56.18	12 48.87	0.13	294	12.3	149	84.2	494.8	912.7	14.7	79.2	78.1	6.1	6.1	0.0	0.0	0.0	0.0	0.0
2011-12-09	10:15	58 56.29	12 48.72	0.13	281	12.3	149	83.7	511.8	913.1	15.1	77.3	76.2	7.7	7.6	0.0	0.0	0.0	0.0	0.0
2011-12-09	10:30	58 56.39	12 48.58	0.13	260	11.2	151	83.4	527.4	913.4	15.4	77.0	75.9	7.6	7.5	0.0	0.0	0.0	0.0	0.0
2011-12-09	10:45	58 56.48	12 48.44	0.12	276	11.2	150	83.0	542.6	913.8	15.8	80.5	79.4	3.7	3.7	0.0	0.0	0.0	0.0	0.0
2011-12-09	11:00	58 56.58	12 48.30	0.13	270	11.1	151	82.7	556.9	914.1	16.1	80.4	79.2	3.5	3.5	0.0	0.0	0.0	0.0	0.0
2011-12-09	11:15	58 56.67	12 48.15	0.13	267	11.1	150	82.4	570.2	914.4	16.3	80.8	79.6	2.8	2.8	0.0	0.0	0.0	0.0	0.0
2011-12-09	11:30	58 56.77	12 48.01	0.06	268	11.9	207	82.1	582.7	914.6	16.6	80.9	79.7	2.5	2.5	0.0	0.0	0.0	0.0	0.0
2011-12-09	11:45	58 56.87	12 48.09	0.04	270	11.8	207	81.9	594.5	914.9	16.8	81.5	80.2	1.7	1.6	0.0	0.0	0.0	0.0	0.0
2011-12-09	12:00	58 56.97	12 48.18	0.04	270	11.8	207	81.6	605.8	915.1	17.0	80.6	79.3	2.3	2.3	0.0	0.0	0.0	0.0	0.0

Volume (m**3) Evaporated oil (%) Current speed (Knots)
 Oil at surface (m**3) Oil at surface (%) Current direction (degrees towards)
 Dispersed oil (m**3) Dispersed oil (%) Wind speed (m/s)
 Oil at sea bed (m**3) Oil at sea bed (%) Wind direction (degrees from)
 Oil at shore (m**3) Oil at shore (%) Viscosity (cSt)
 Water content (%) Density (kg/m**3)

8 Support

Calculation, customer relations

Cecilia Ambjörn, Oceanographer

0709-784488, 011-4958174

Email : Cecilia.Ambjorn@smhi.se

System or installation problems

Lina Ettling, Application Manager

Email : Lina.Ettling@smhi.se

Address:

SMHI

60176 Norrköping

Sweden

SMHI Phone +46-11-4958000

SMHI Fax: +46-11-4958001